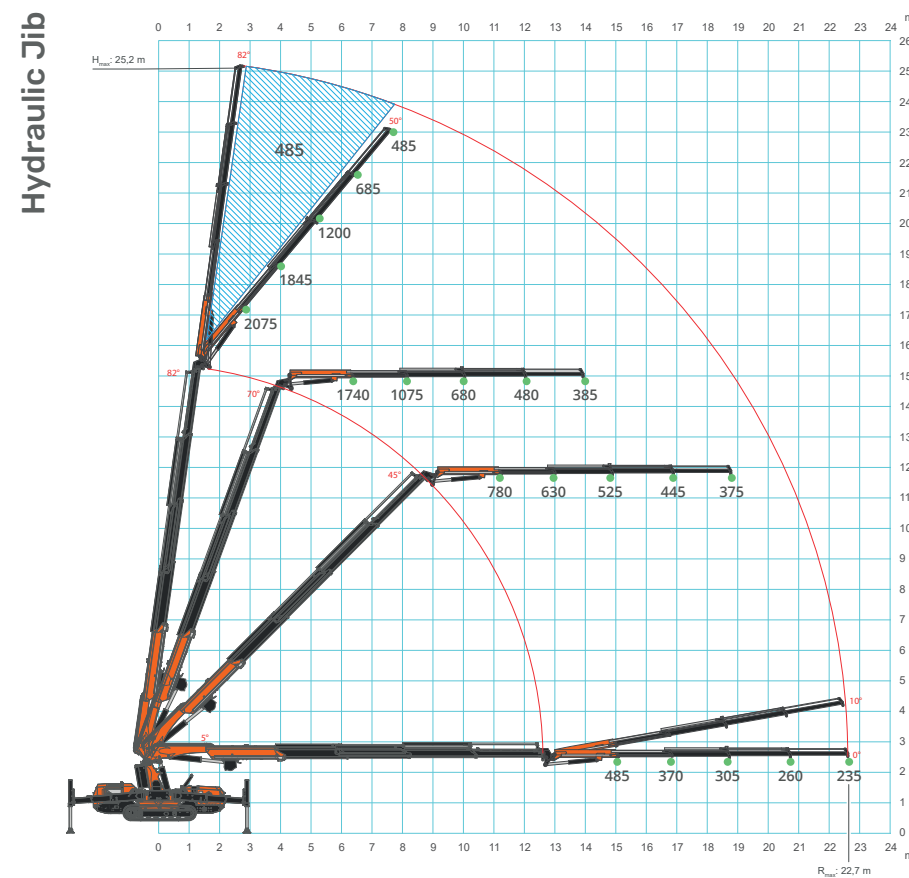
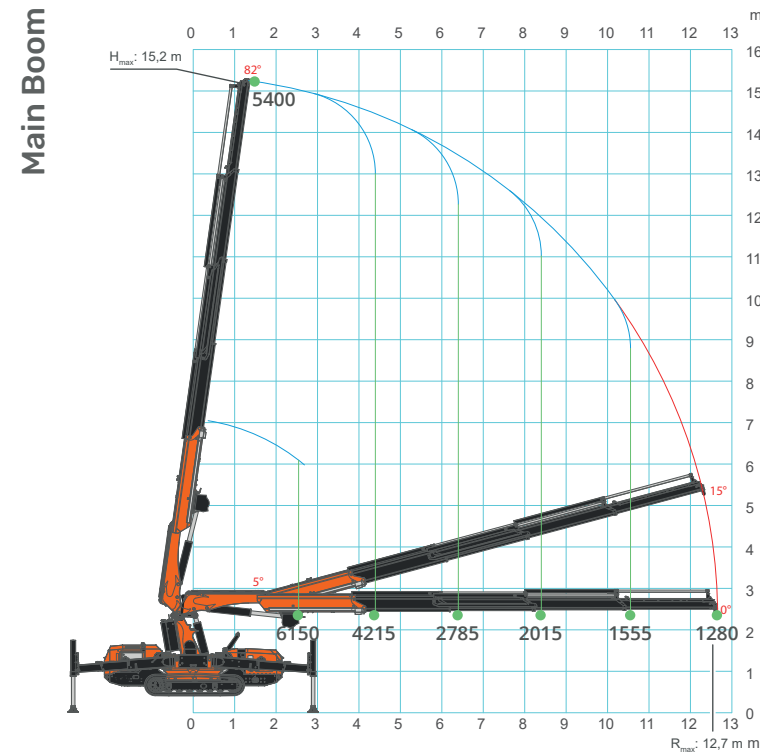


## LOAD CHARTS



## TOOLS AVAILABLE

### HYDRAULIC JIB

2075 kg SWL



### MAN BASKET

1 or 2 people



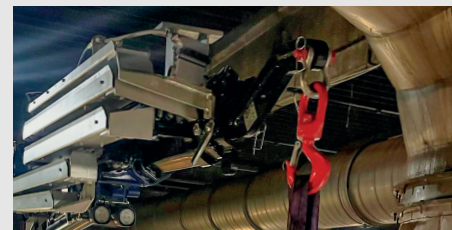
### GLASS MANIPULATOR

800 kg SWL - JVM800R

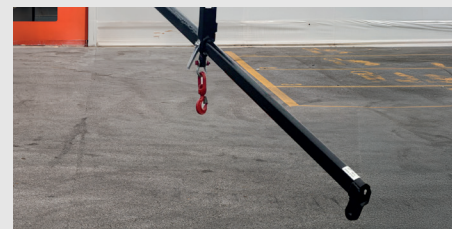


### SEARCHER HOOK

5500 kg SWL



### MECHANICAL EXTENSIONS



# JF235

LITHIUM BATTERY



Lifting capacity

**6150 kg**



Max tip height

**25,0 m**



Dimensions (l x w x h)

**5010 x 1600 x 2480 mm**



Powered by

**Lithium battery**



Weight

**9780 kg**



EN [m - kg]



**JF235**  
LITHIUM BATTERY

Jekko s.r.l. • [info@jekko.it](mailto:info@jekko.it) • [www.jekko-cranes.com](http://www.jekko-cranes.com)  
Specifications are subject to change without notice.  
All data provided is for reference purposes only and is not legally binding.

V25.06

Jekko s.r.l. • [info@jekko.it](mailto:info@jekko.it) • [www.jekko-cranes.com](http://www.jekko-cranes.com)



# FEATURES



## 3 BOOM ARTICULATIONS

- Higher boom versatility
- Pass-over obstacles
- Negative angle operation



## LITHIUM BATTERY POWERED

- Indoor operation, emission free
- Maintenance free
- Runtime over 1 workday
- Integrated BMS - Battery Monitoring System
- On board single & three phase battery charger: 0-80% in 4h 30' (400V)
- Adjustable charging current
- Work while charging

### VERSATILE STABILITY CONFIGURATIONS

- Stepless outriggers rotation 0°/45°
- Stepless telescopic outriggers extension
- Adjustable outriggers height
- Asymmetric configuration



### ENDLESS CRANE CONFIGURATIONS

- Hook** - 6150 kg capacity
- Winch**
  - 1500 kg capacity single fall / 3000 kg 2 falls
  - 40 m rope
- Hydraulic jib** - 2075 kg capacity
  - Hook or Winch mode
  - 11,0 m length fully extended
  - Hydraulic lines for tools
- Independent hydraulic tools** - Easy connection for any tool

### INTUITIVE USER INTERFACE

- Radio control**
  - Optimized usability
  - Improved layout
- Touch display:** 7" IP66 heavy duty
  - Live stability area
  - Crane assistant onboard
  - Self-diagnostics & troubleshooting



### VARIABLE SPEED MOTOR MANAGEMENT

- Accurate crane movements
- Low consumption
- Low noise



### MAN BASKET

- Up to 25,3 m height
- Single or two people
- Self-levelling, rotation and height adjustment
- Aluminium, steel or fiberglass
- EN280 certified

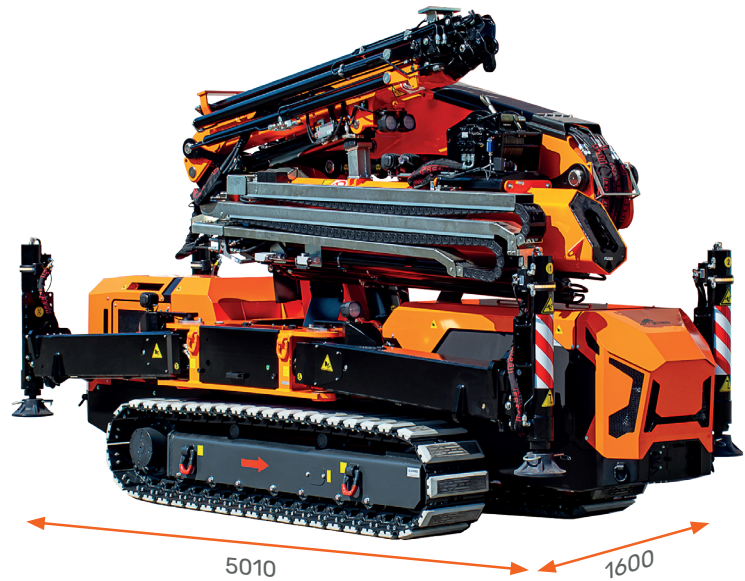


### J-LINK POWERED BY TRACKUNIT\*

- Remote fleet monitoring and diagnostics
- Built-in or retrofit on existing units

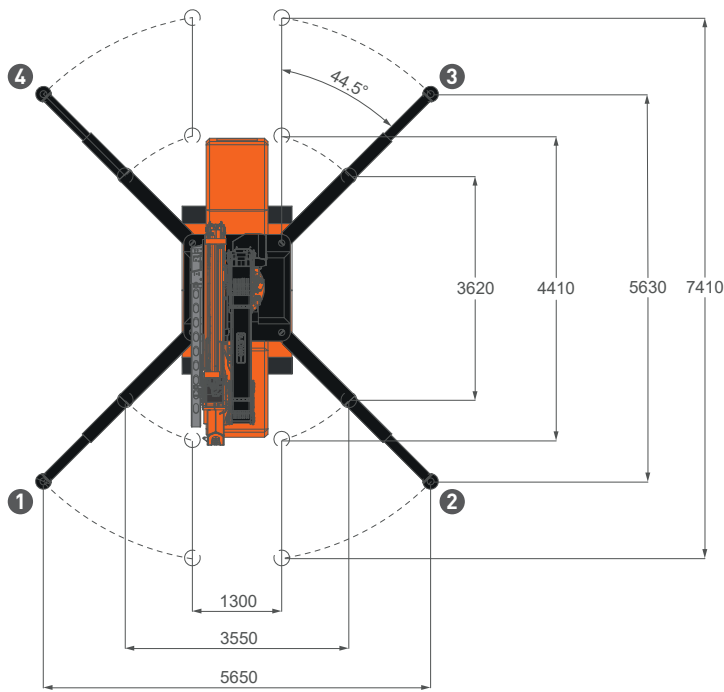


### EASY TRANSPORT



DIMENSIONS (mm)

STABILITY AREA (mm)



### COMPACT FOOTPRINT



\*Optional

